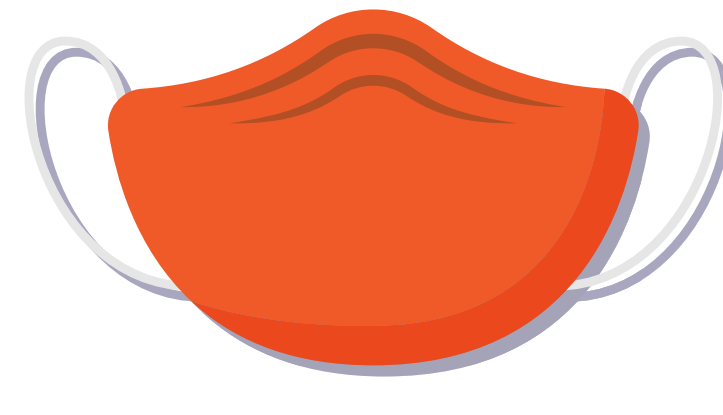


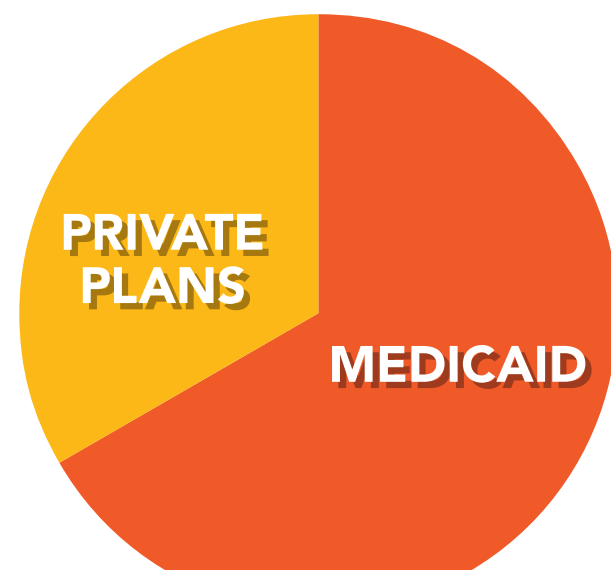
NEED FOR AFFORDABLE HEALTH INSURANCE IS GROWING

90,000+ ENROLLED



SINCE THE CORONAVIRUS THREAT

- One-third private plans and two-thirds Medicaid.



- Thanks to Gov. Larry Hogan, Maryland Insurance Commissioner Kathleen Birrane and our carriers CareFirst and Kaiser Permanente for their support of the special enrollment!

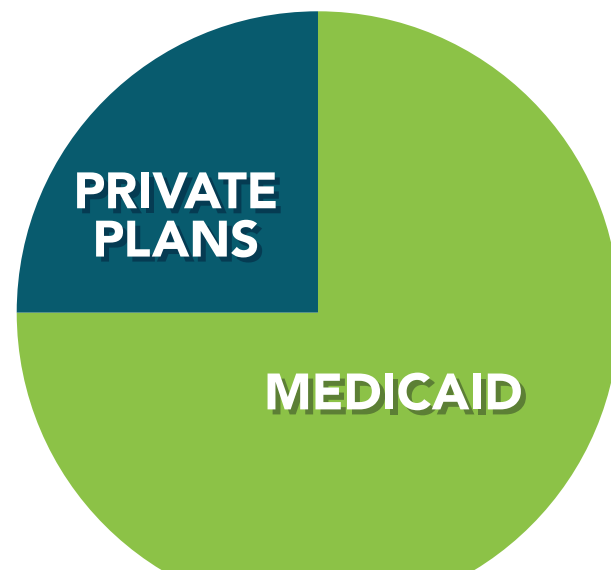
4,000 ENROLLED



IN THE EASY ENROLLMENT PROGRAM IN ITS FIRST YEAR

- Nearly **44,000 Maryland households** checked the box on their tax forms to receive information about health insurance in a novel data-sharing arrangement between MHBE and the Comptroller's office.

- 1,000 private plans and 3,000 Medicaid.



- MHBE will follow up with Marylanders who checked the box this fall during open enrollment for 2021.

- Thanks to **Maryland Citizens' Health Initiative** for their role in research and marketing, including advertising with Orioles legend Eddie Murray!



25,000+ ENROLLED IN DENTAL COVERAGE

OPEN ENROLLMENT



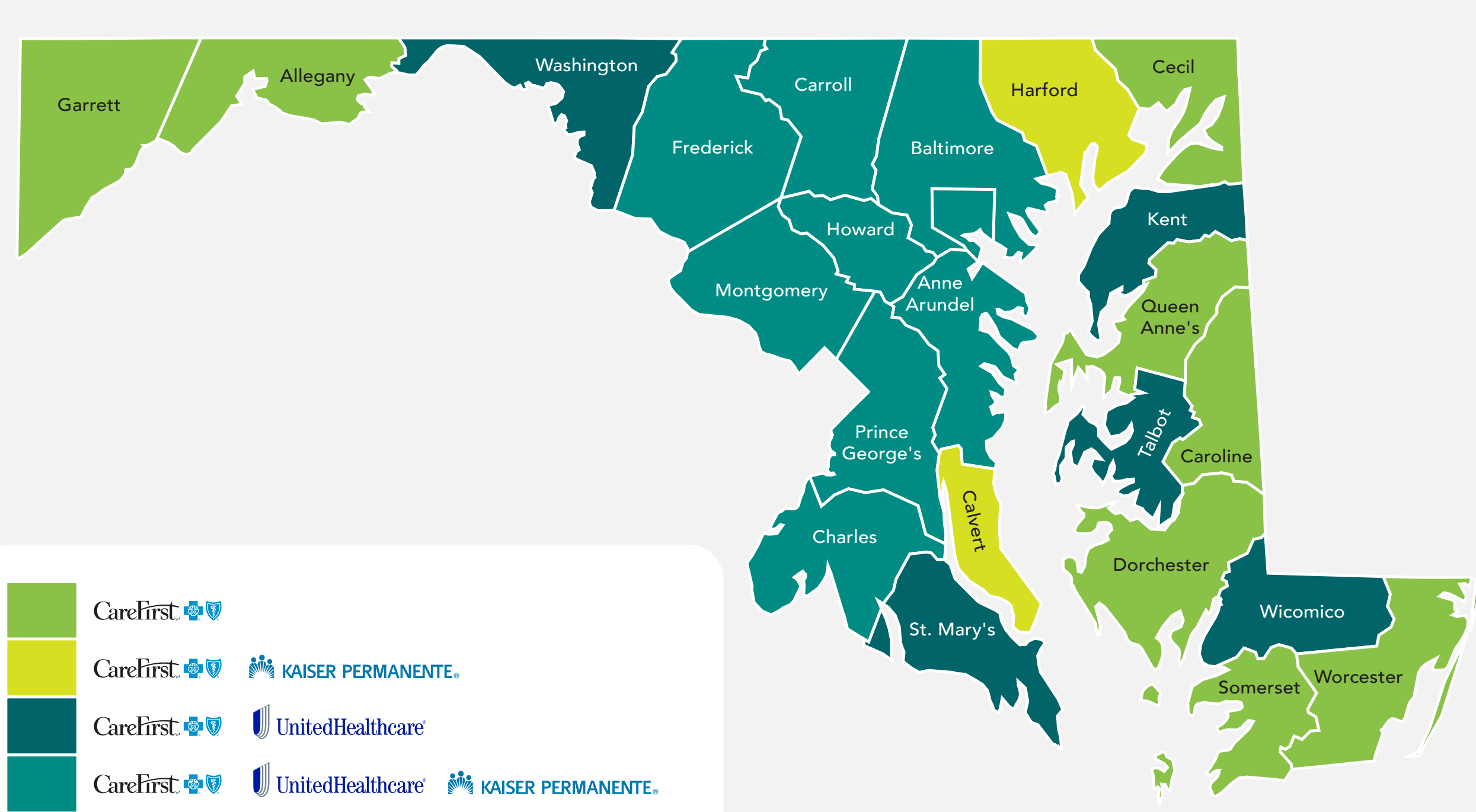
FOR 2021 BEGAN NOV. 1

WHAT'S NEW?

- Average **plan prices dropped** for third year in a row.
- UnitedHealthcare returned to the market** and offers plans in 14 counties.
- Gold plans have smaller deductibles than Silver or Bronze plans, by thousands of dollars, and the **rates dropped for Gold in 2021**.
- Lower out-of-pocket costs for Marylanders** with Value plans allow three doctor visits and other services before the deductible.
- 700+ navigators, brokers and call center representatives** are trained to help consumers apply and enroll.

www.MarylandHealthConnection.gov/find-help

Insurance Carriers by County for 2021

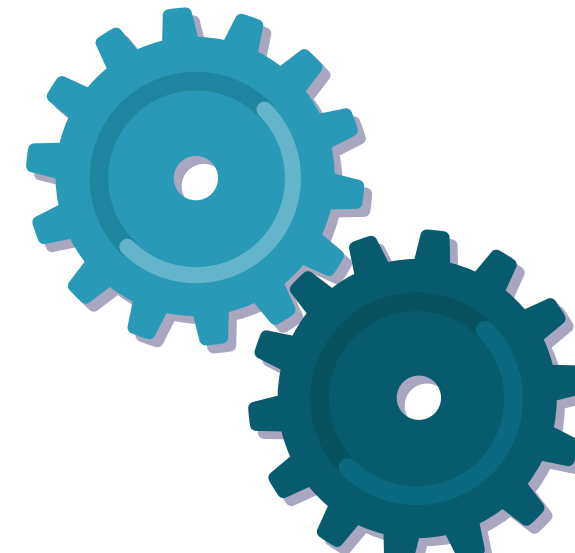


NEARLY 60% SAID THEY ARE MORE LIKELY TO WANT HEALTH INSURANCE



- Compared to prior to the pandemic, according to a survey of 1,100 Marylanders conducted for MHBE.

MORE WORK TO BE DONE



- An estimated **65,000 to 195,000** may have lost employer coverage in Maryland since March.
- About **half would qualify for free or low-cost coverage** through Maryland Health Connection.