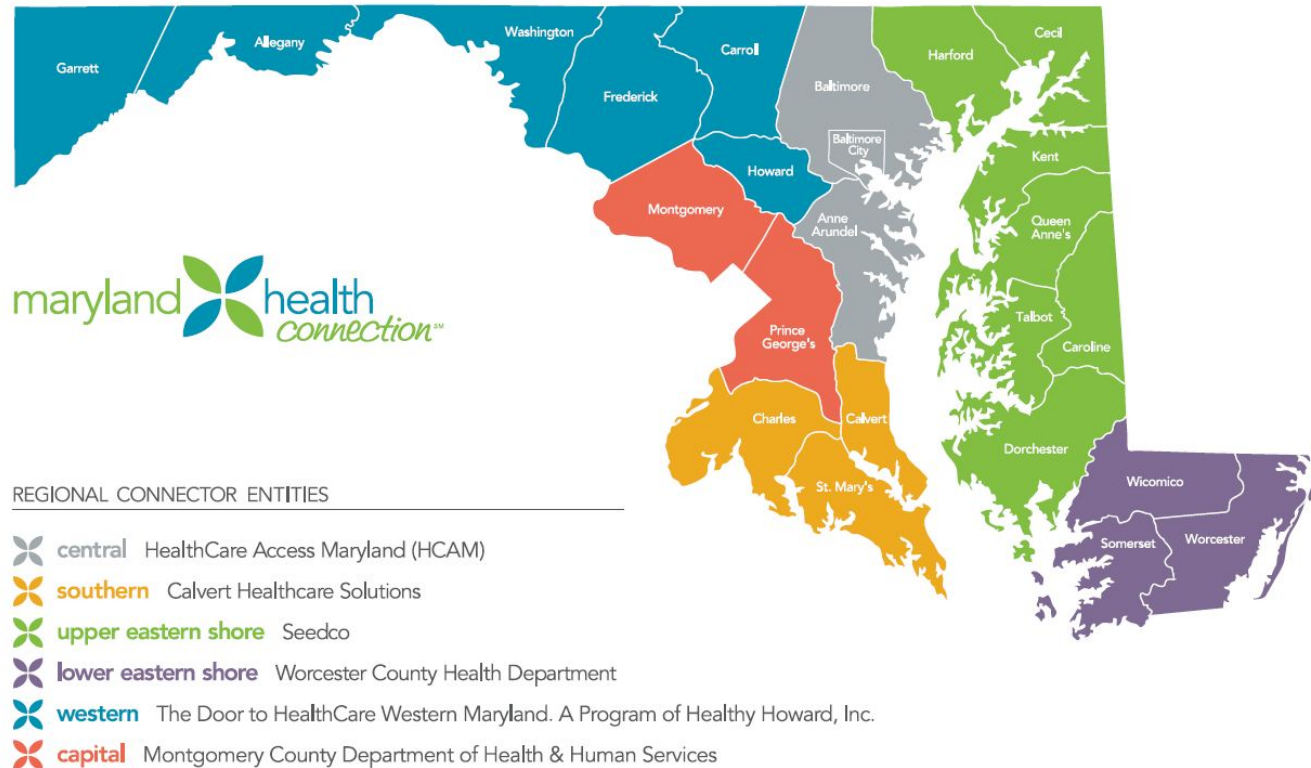


# Overview of Proposed RFP for Maryland Connector Entity Program

November 23, 2015

# Connector Program for FY 2017

Applicants may submit proposals for any of the six current regions



- Connector Entity applicants will be required to demonstrate experience with supervising navigators in the current program
- Program activities must focus on providing in-person assistance for MHC application and enrollment
- Secondary focus will be guiding outreach efforts to eligible, hard-to-reach populations

- Connector Entity applicants must demonstrate they are sufficiently self-funded to meet program goals with their current infrastructure
- Connector Entity applicants may *request* to submit proposals for sub-regions or individual local jurisdictions; these requests must be made to MHBE in writing within 15 days of the solicitation release. Decision will be made within 10 days of receipt and will be made public.

# Application Requirements - Technical Response

- Connector Entity Applicants will be asked to describe their overall approach for providing required services, including
  - plans for sub-grantees
  - enrollment partners
  - liaison with local agencies, insurance producers, Application Counselor Sponsoring Entities (ACSEs)
  - engagement of faith-based, culture-specific or disease-specific organizations that target hard to reach populations

- Connector Entity Applicants will be asked to submit a detailed budget indicating a breakdown of funds for entire CE enterprise, the prime entity, and each sub-grantee
  
- Line items to include
  - Salary/ fringe
  - Rent/ office/ meeting space
  - Internet/ IT services
  - Training, Marketing, Travel
  - Office supplies/Equipment
  - Indirect costs (no more than 10% for management and oversight)

# Timeline

<b>Release of Grant Solicitation</b>	<b>End of January 2016</b>
<b>Proposals due to MHBE</b>	<b>End of March 2016</b>
<b>Grant award announcement</b>	<b>End of April 2016</b>
<b>Agreement/Execution</b>	<b>May – June 2016</b>